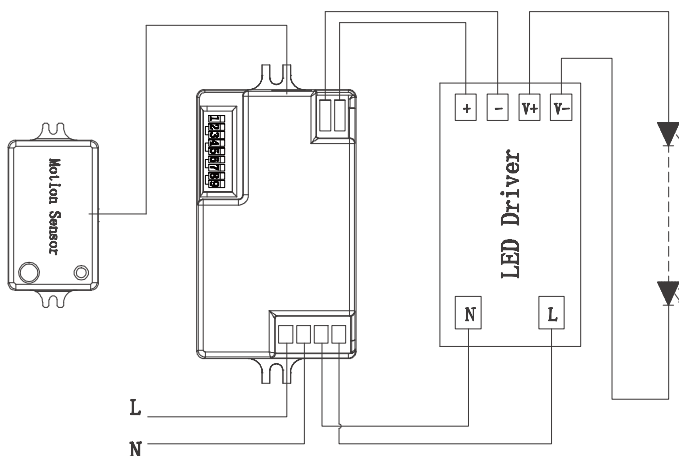
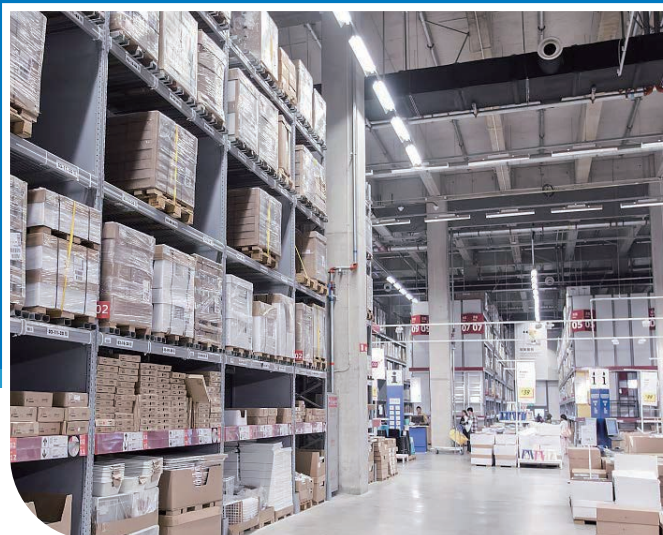


FDHB-405V-MMS

Highbay detachable Microwave Motion Sensor



Wiring diagram



On/off control



Stand-by
dimming level



Detection area



Remote control
setting



Hold time



10-15M Highbay
altitude



Daylight sensor



warranty
5
years

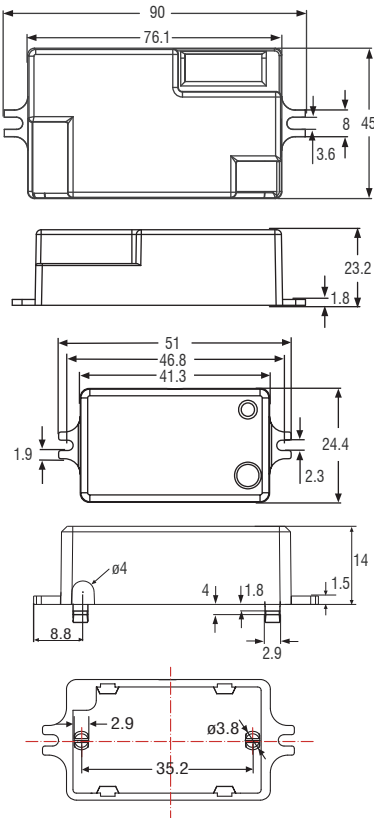


Stand-by period

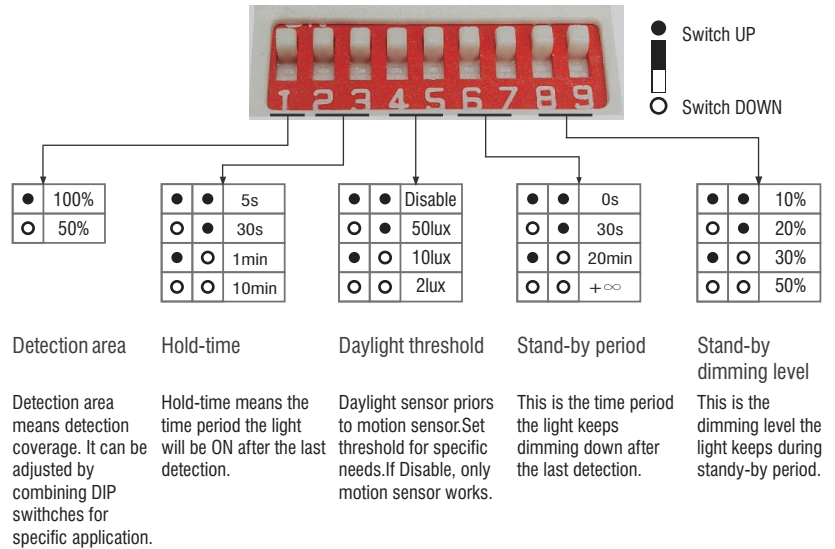
01 Technical data

| | |
|------------------------|---|
| Operating voltage | 120~277 VAC 50/60Hz |
| Switching capacity | Max.3.0A@120Vac,Max.2.0A@277Vac |
| Stand-by power | <1W |
| Detection area | 50%/100% |
| Hold time | 5s/30s/1min/10min |
| Daylight threshold | 2Lux/10Lux/50Lux Disable |
| Stand-by period | 0s/30s/20min/+ ∞ |
| Stand-by dimming level | 10%/20%/30%/50% |
| Microwave frequency | 5.8GHz±75MHz |
| Microwave power | <0.3mW |
| Interfaces | 6-pole pluggable clamp terminal (L,N,N',1-10v+,1-10v-) for 0.75- 1.5mm ² cable |
| Mounting height | Max.15m(ceiling mounted);Max.3m(wall mounted) |
| Detection range | Max.ø14m(ceiling mounted);Max.20m(wall mounted) |
| Detection angle | 30°-150° |
| Operating temperature | -20°C~+60°C |
| IP rating | IP20 |

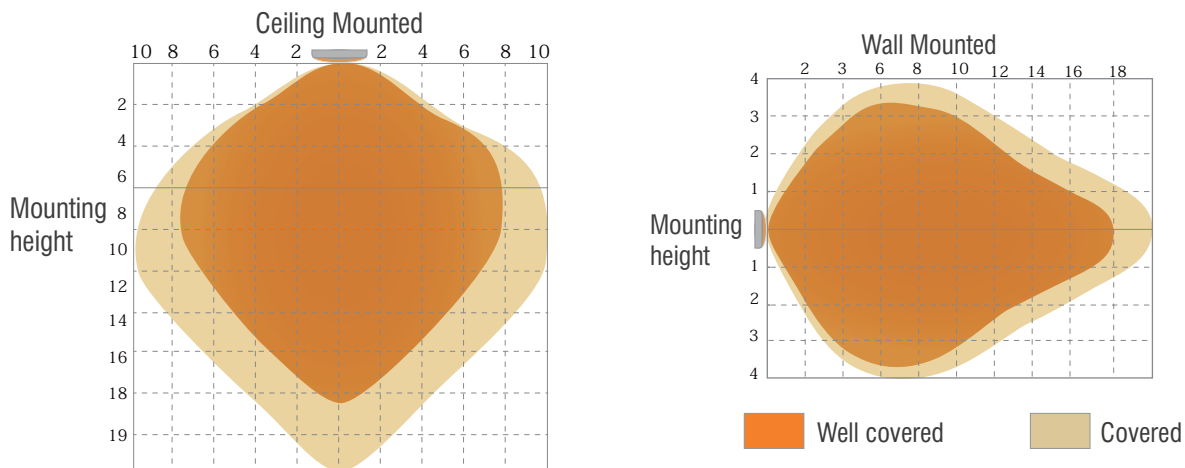
02 Mechanical structure(mm)



03 Settings

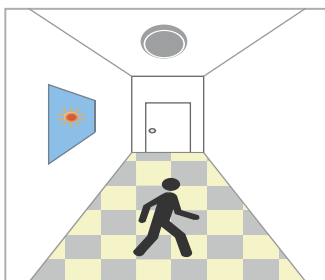


04 Detection coverage



05 Application

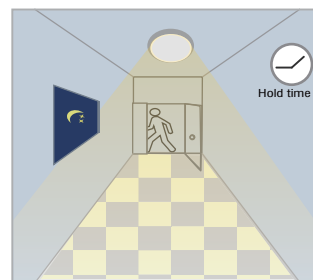
Function Demo - Dimmable control/Corridor function



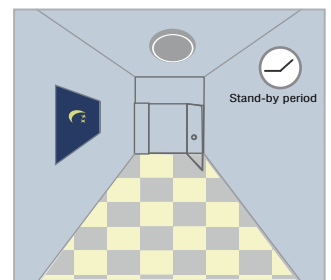
With sufficient daylight, even when motion detected, light remains OFF.



With insufficient daylight, when motion detected, light ON.



After last detection, the light will be dimmed down to the stand-by dimming level(10%,20%,30% or 50%) after holdtime.



After the stand-by period, light OFF.