

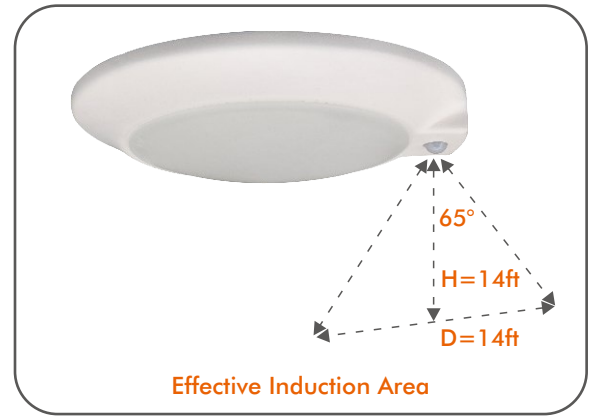
4" LED Closet Lights with PIR Motion Sensor

Turns Lights ON/OFF Automatically

Lights turn ON automatically when motion is detected and OFF after 30 seconds when no motion is detected, Ideal for closets, workrooms, basements, storage areas, utility rooms and attics etc.



Turns Lights ON/OFF Automatically



PIR Motion Sensor

Turn on when detecting movement, not only in dark, but also daytime. Turn off after 30 seconds (customized is also available) delay if no more motion

• When motion is detected, it automatically turning lights ON and turns the lights off after 30 seconds when the room is vacated

- Flame Retarded PC material
- Input voltage: AC 120V 50/60Hz
- The light features a 10 Watt LED module, making it the energy efficient, popular alternative to incandescent and CFL fixtures
- The light incorporates today's most wanted features and meets NFPA 70, NEC Section 410.16 C (1) requirements
- It is easy to install with keyholes for multiple ceiling box configurations
- Designed for indoor use only

MODEL: FDLED-4-10W-3K-PIR-WH COLOR TEMPERATURE

Warm White: 3000K



Wattage



Lumens



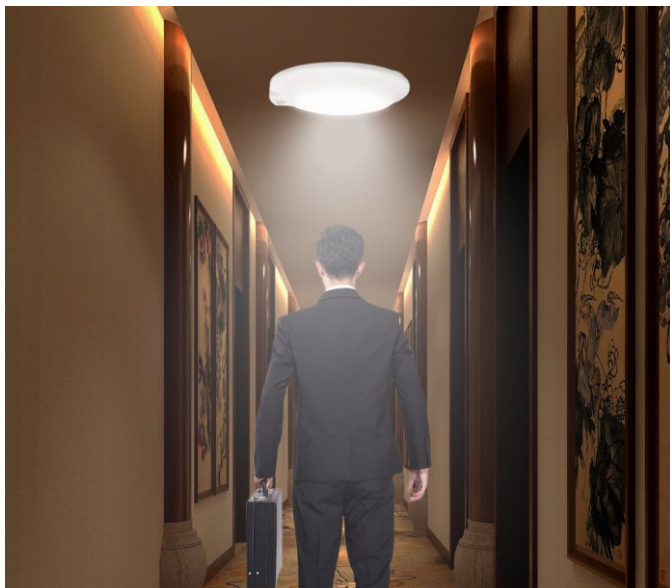
Beam Angle



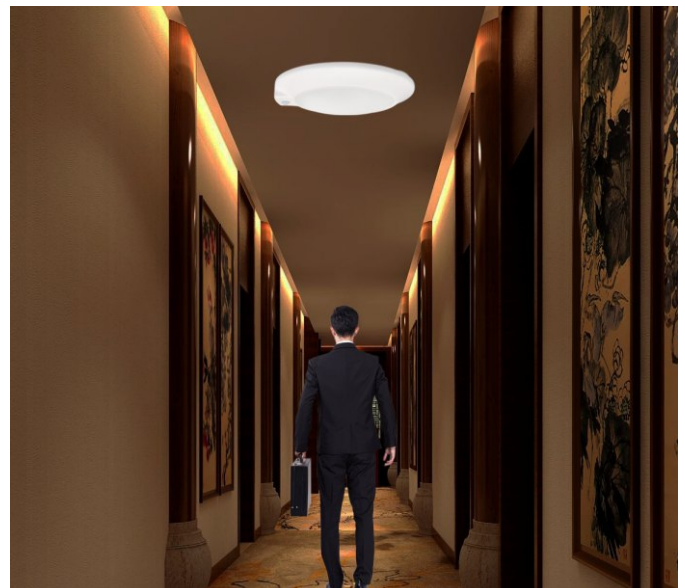
Lifespan



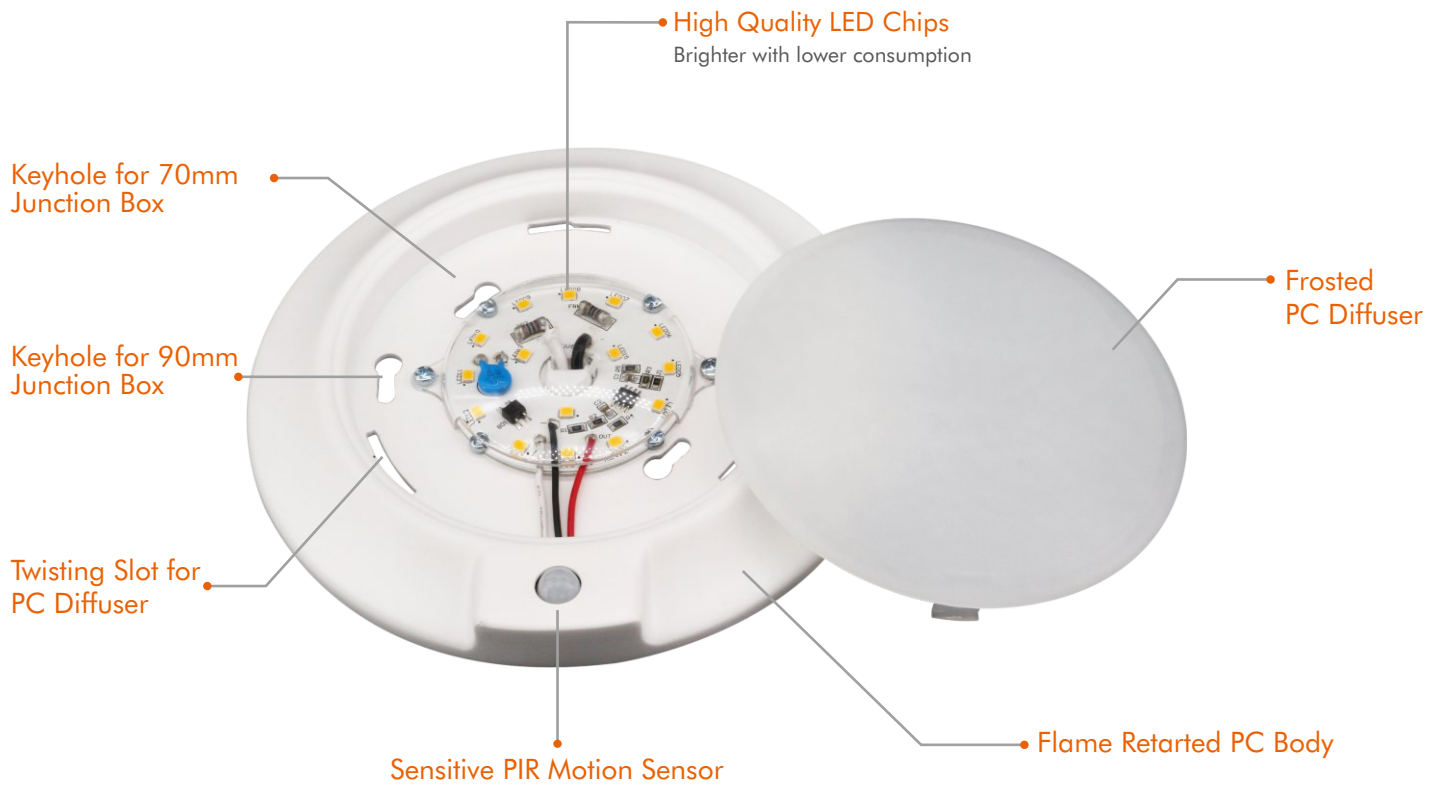
Color Rendering Index



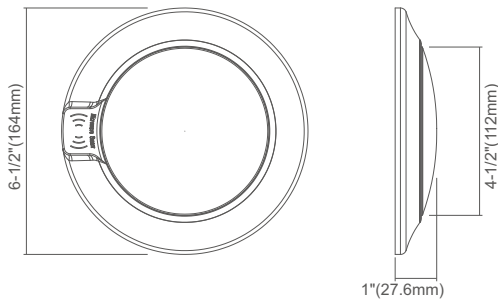
Automatically turn to bright light when walk into the reaction range



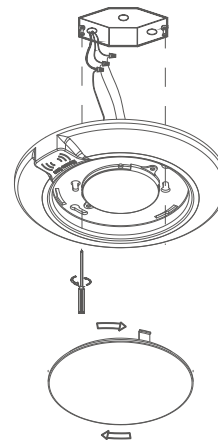
Automatically turn to standby mode when people walk out of the reaction range



Dimensions



Installation (Junction Box)



4" LED closets with PIR motion sensor provide surface mount light for new construction applications. Unit fits most 4" junction boxes and can replace 5", 6" recessed can lights to eliminate baffles & Fire rated boxes.

Step 1: Prior to installation, please install two screws(furnished) into the junction box. Do not drive screws completely to the end of the junction box.

Step 2: Connect supply wires to wires in fixture wiring box with proper size wire nuts or push wires into "push-in" connector. Connect white to white, black to black, and green or bare copper wire to bare copper wire.

Step 3: The ground wire at the service junction box may need to be secured to a ground screw.

Step 4: With a screwdriver, attach the disk light tightly to the j-box.

Step 5: Complete the installation by twisting the diffuser on the disk light metal enclosure and lock the diffuser in place.

Ordering Guide

Complete with Accessories for 4" and 6" Recess Cans

Picture	Model	Description
	4" LED Closet Lights with PIR Motion Sensor - Warm White	
	100070	FDLED-4-10W-3K-PIR-WH 4" 10W 3000K 600Lm