

Pre-Select 5 CCT 3.5" Trimless LED Downlight

FDTL-LED-3.5-12W-5CCT-WH

SKU#101059

FDTL-LED-3.5-12W-5CCT-BK

SKU#101073



Trim Finish Options

- BLACK
- WHITE

Description

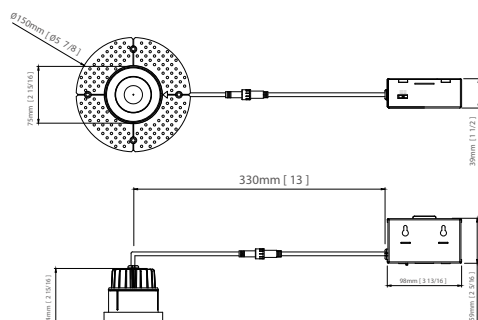
3.5" Trimless LED Downlight, 12 watts

Features

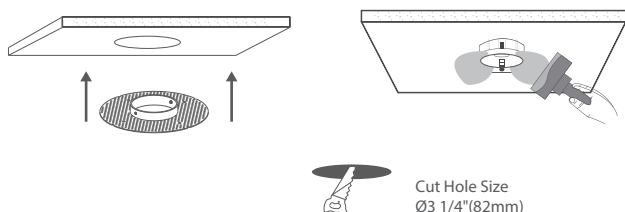
- * Durable airtight aluminum body
- * Type IC, Air-Tight & Wet - No Housing Required
- * Flangeless installation, provide a more high end looking
- * No housing required, easy and fast installation
- * 10%-100% dimming capability. This fixture is compatible with industry standard forward-phase / reverse-phase and TRIAC/ELV dimmers
- * Rated for long life - over 50,000 hours



DIMENSIONS



INSTALLATION



ACCESSORIES (Optional)

Mounting Plates



3.5" new construction
pre-mounting plate
opening Ø3 1/2" (90mm)



3-3/4" new
construction pre-mounting plate
opening Ø3-3/4" (95mm)



2-3/8" new construction
pre-mounting plate opening Ø2-1/8" (54mm), Ø2-7/8" (72mm),
Ø3-3/4" (95mm), Ø5-1/4" (132mm)

Flexible Connector



4ft/ 6ft/ 10ft/ 20ft flexible connector



INCLUDED IN BOX

- 3.5" 12W Round LED Trimless Downlight with Driver
- 4 Screws