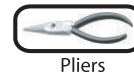


# 4" LED Flush Mount Installation Instruction



## TOOLS AND MATERIALS REQUIRED:

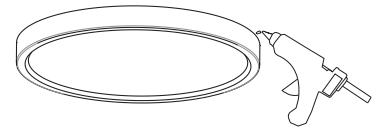


Wiring supplies  
as required by  
the Canadian  
Electrical Code  
and/or the  
Quebec  
Electrical code



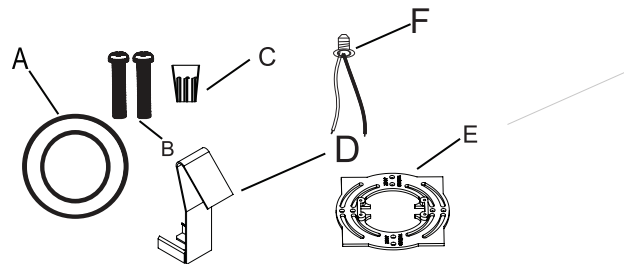
## SAFETY PRECAUTIONS:

1. TURN OFF ELECTRICAL POWER BEFORE STARTING INSTALLATION OF LIGHT FIXTURE.
2. THIS PRODUCT MUST BE INSTALLED IN ACCORDANCE WITH THE APPLICABLE INSTALLATION CODE BY A PERSON FAMILIAR WITH THE CONSTRUCTION AND OPERATION OF THE PRODUCT AND THE HAZARDS INVOLVED.
3. CAUTION RISK OF FIRE . CONSULT A QUALIFIED ELECTRICIAN TO ENSURE CORRECT BRANCH CIRCUIT CONDUCTOR.
4. FOR EXTERNAL USE ONLY, RECOMMEND TO APPLY WATERPROOF SILICONE TO SEAL AROUND TRIM AND CEILING.

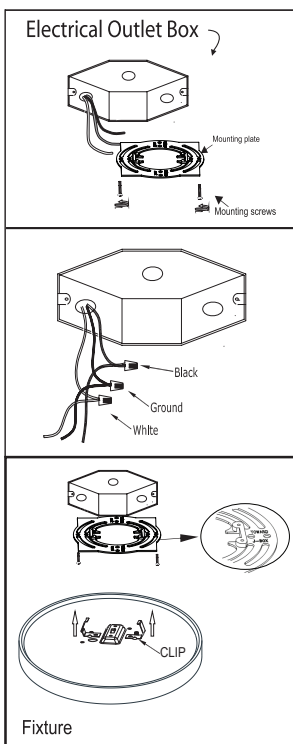


## PACKAGE CONTENTS

| PART | DESCRIPTION           | QTY | NOTE     |
|------|-----------------------|-----|----------|
| A    | LED FLUSH MOUNT LIGHT | 1   |          |
| B    | Mounting screws       | 2   |          |
| C    | Wire nut              | 3   |          |
| D    | CLIP                  | 3   | OPTIONAL |
| E    | Mounting plate        | 1   |          |
| F    | E26 lamp holder       | 1   | OPTIONAL |

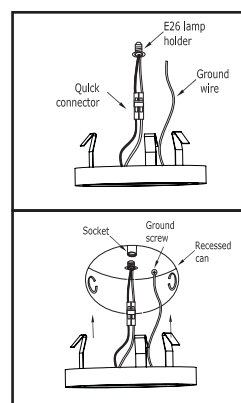


## Option #1: FLUSH MOUNT



1. Prior to installation, install mounting plate into the electrical outlet box with mounting screws. Drive screws completely to the end of the junction box.
2. Connect supply wires to wires on fixture with wire nuts or push wires into Quick Connector. Connect white to white, black to black, and copper wire to copper wire as grounding connection.
3. Completing the installation by pushing the fixture into the mounting plate

## Option #2: RETROFIT A RECESSED CAN



Insert wires into Quick Connector.  
Black to black and white to white.  
Attach ground wire to ground  
screw in recessed can.

Turn E26 lamp holder into socket  
base.

Connect Quick Connectors  
Tuck all wires into recessed  
can. Squeeze springs and push up  
into recessed can.

