



TOOLS AND MATERIALS REQUIRED:

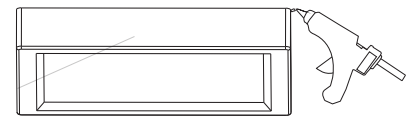


Wiring supplies
as required by
the Canadian
Electrical Code
and/or the
Quebec
Electrical code



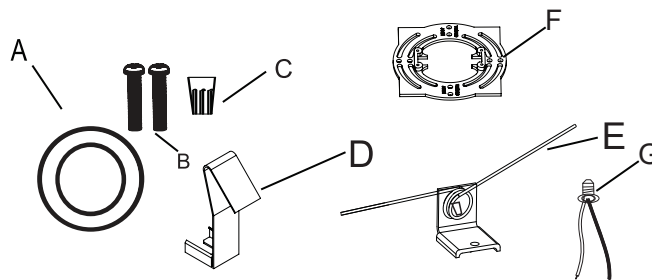
SAFETY PRECAUTIONS:

- 1. TURN OFF ELECTRICAL POWER BEFORE STARTING INSTALLATION OF LIGHT FIXTURE.**
- 2. THIS PRODUCT MUST BE INSTALLED IN ACCORDANCE WITH THE APPLICABLE INSTALLATION CODE BY A PERSON FAMILIAR WITH THE CONSTRUCTION AND OPERATION OF THE PRODUCT AND THE HAZARDS INVOLVED.**
- 3. CAUTION RISK OF FIRE . CONSULT A QUALIFIED ELECTRICIAN TO ENSURE CORRECT BRANCH CIRCUIT CONDUCTOR.**
- 4. FOR EXETEMAL USE ONLY,RECOMMEND APPLYING WATERPROOF SILICONE TO SEAL AROUND TRIM AND CEILING.**

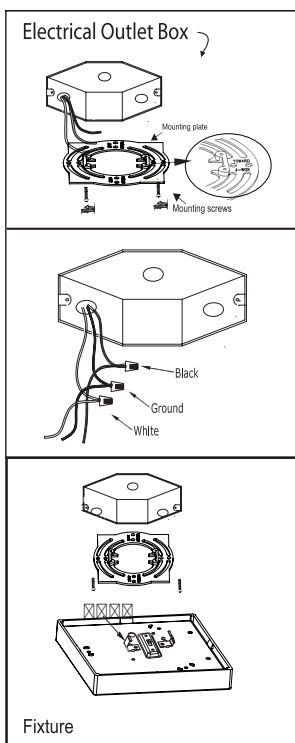


PACKAGE CONTENTS

| PART | DESCRIPTION | QTY | NOTE |
|------|------------------------|-----|----------|
| A | Slim flush mount light | 1 | |
| B | Mounting screws | 2 | |
| C | Wire nut | 3 | |
| D | Clip | 3 | Optional |
| E | Springs | 2 | Optional |
| F | Mounting plate | 1 | Optional |
| G | E26 lamp holder | 1 | Optional |

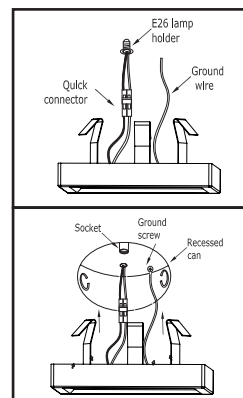


Option #1: FLUSH MOUNT



- 1.** Prior to installation, install mounting plate into the electrical outlet box with mounting screws. Drive screws completely to the end of the junction box.
- 2.** Connect supply wires to wires on fixture with wire nuts or push wires into Quick Connector. Connect white to white, black to black, and copper wire to copper wire as grounding connection.
- 3.** Completing the installation by pushing the fixture into the mounting plate

Option #2: RETROFIT A RECESSED CAN



Insert wires into Quick connector. Black to black and white to white. Attach ground wire to ground screw in recessed can.

Turn E26 lamp holder into socket base.

Connect Quick Connectors. Tuck all wires into recessed can. Squeeze springs and push up into recessed can.

